

REST API Services Deployment in WebSphere
Oracle FLEXCUBE Universal Banking
Release 12.87.7.0.0
[May] [2021]



Table of Contents

- 1. FLEXCUBE UNIVERSAL BANKING SOLUTIONS 1-1
 - 1.1 REST API SERVICES FULL DEPLOYMENT 1-1
 - 1.2 ENABLING LOGS FOR REST APPLICATION..... 1-8

1. FLEXCUBE Universal Banking Solutions

This document describes step to install REST Services into WebSphere application server in full.

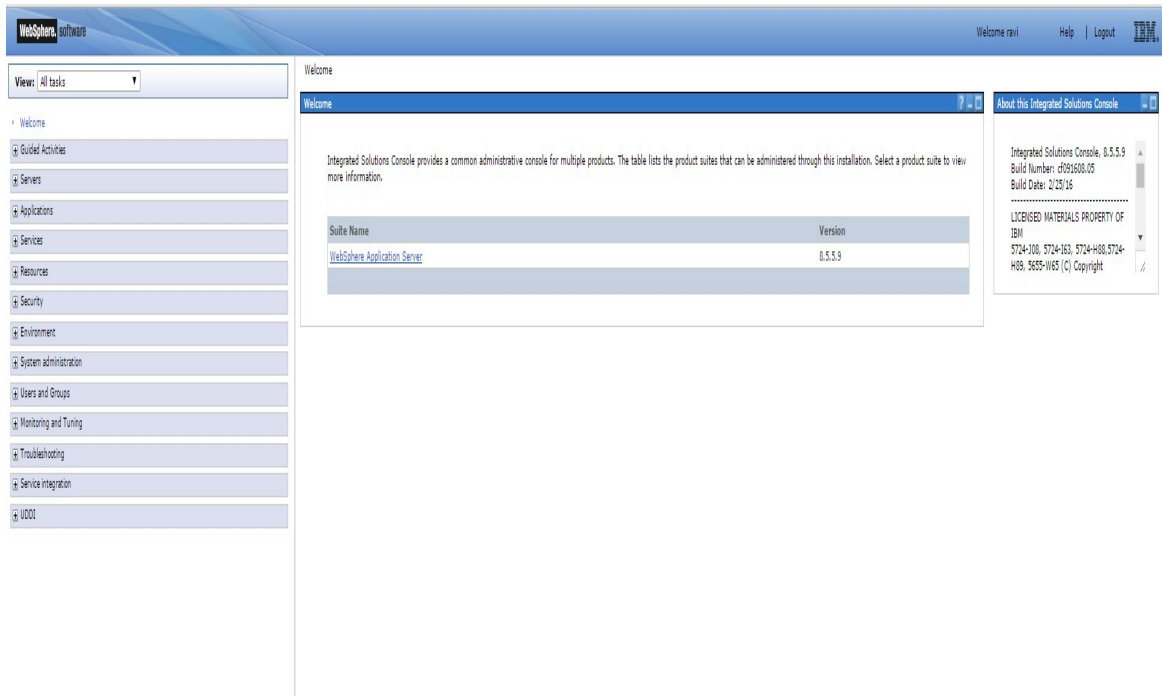
1.1 REST API Services Full Deployment

1. The following jars must be placed in the {WAS_Installed_Location}/IBM/WebSphere/AppServer/lib/ext folder of the server and restart.
 - a. **ojdbc6.jar**
 - b. **eclipselink.jar**
 - c. **jettison-1.3.7.jar**
2. Before deploying the EAR, please create an XA Datasource **jdbc/fcliteAPIDS** that will be referring to the API DB
3. Launch WebSphere console following screen will be displayed.

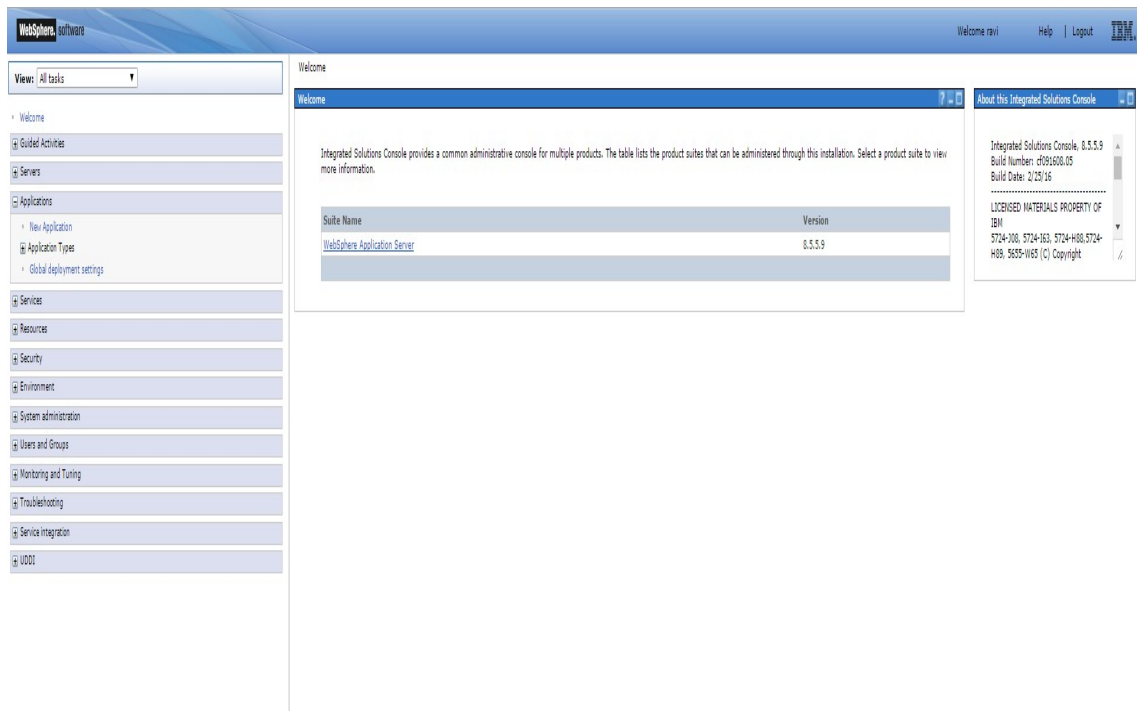


UserId: Enter user name

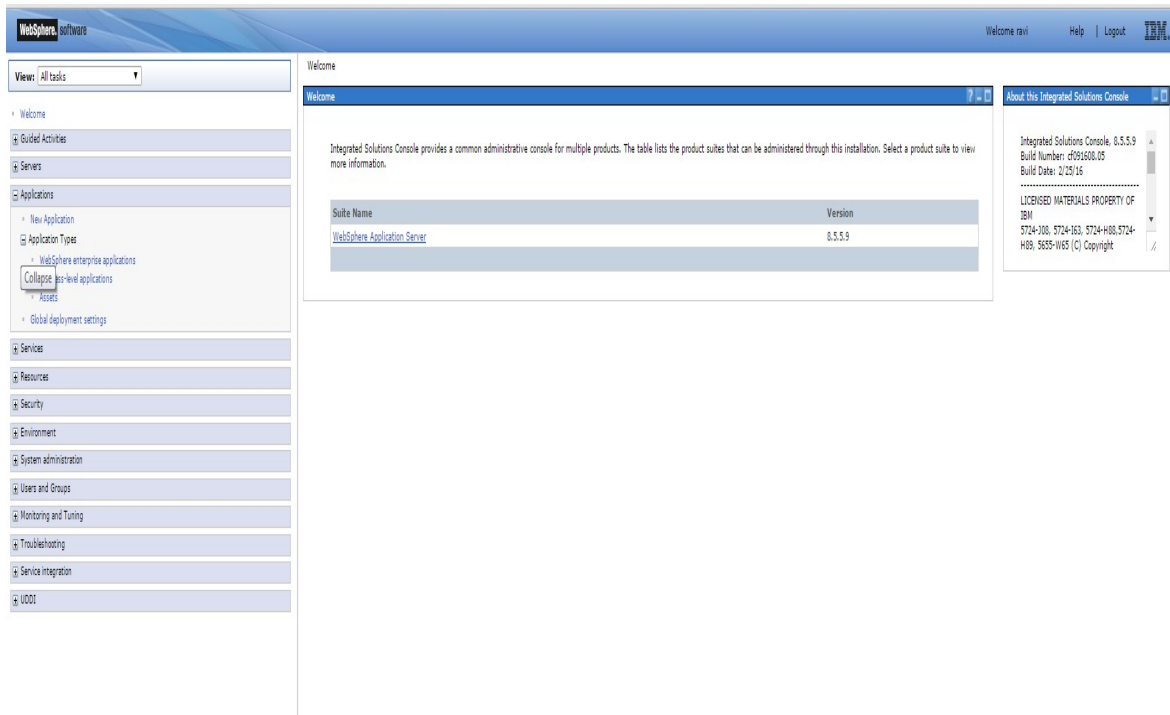
4. Click on 'Log in' and the following screen is displayed:



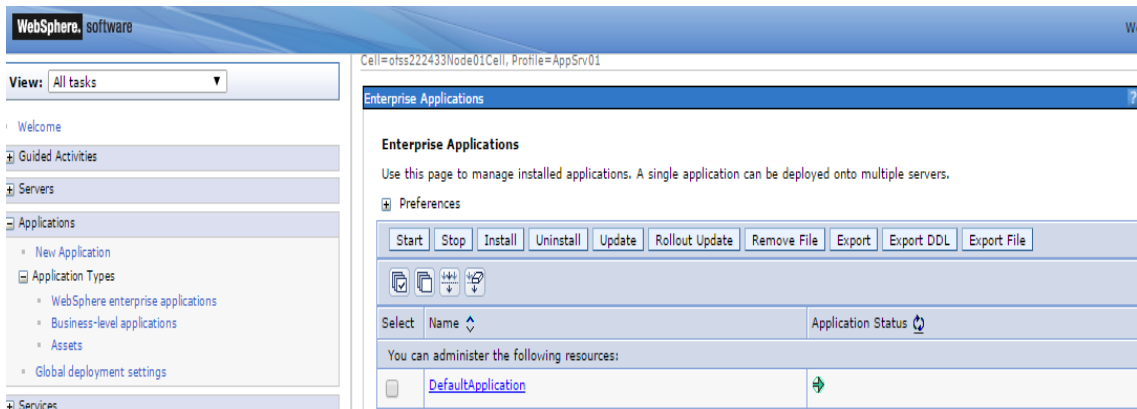
5. Expand Applications from the left panel and the following screen will be displayed.



6. Expand Application Types from the left panel and the following screen will be displayed.



7. Select WebSphere enterprise allocations and the following screen will be displayed.



8. Click on Install and the following screen will be displayed.

Preparing for the application installation

Specify the EAR, WAR, JAR, or SAR module to upload and install.

Path to the new application

Local file system

Full path

Choose File FCLiteAPIEAR.ear

Remote file system

Full path

Browse...

Next Cancel

Choose File

Browse and select the EAR file.

9. Click Next and the following screen will be displayed.

Enterprise Applications

Preparing for the application installation

How do you want to install the application?

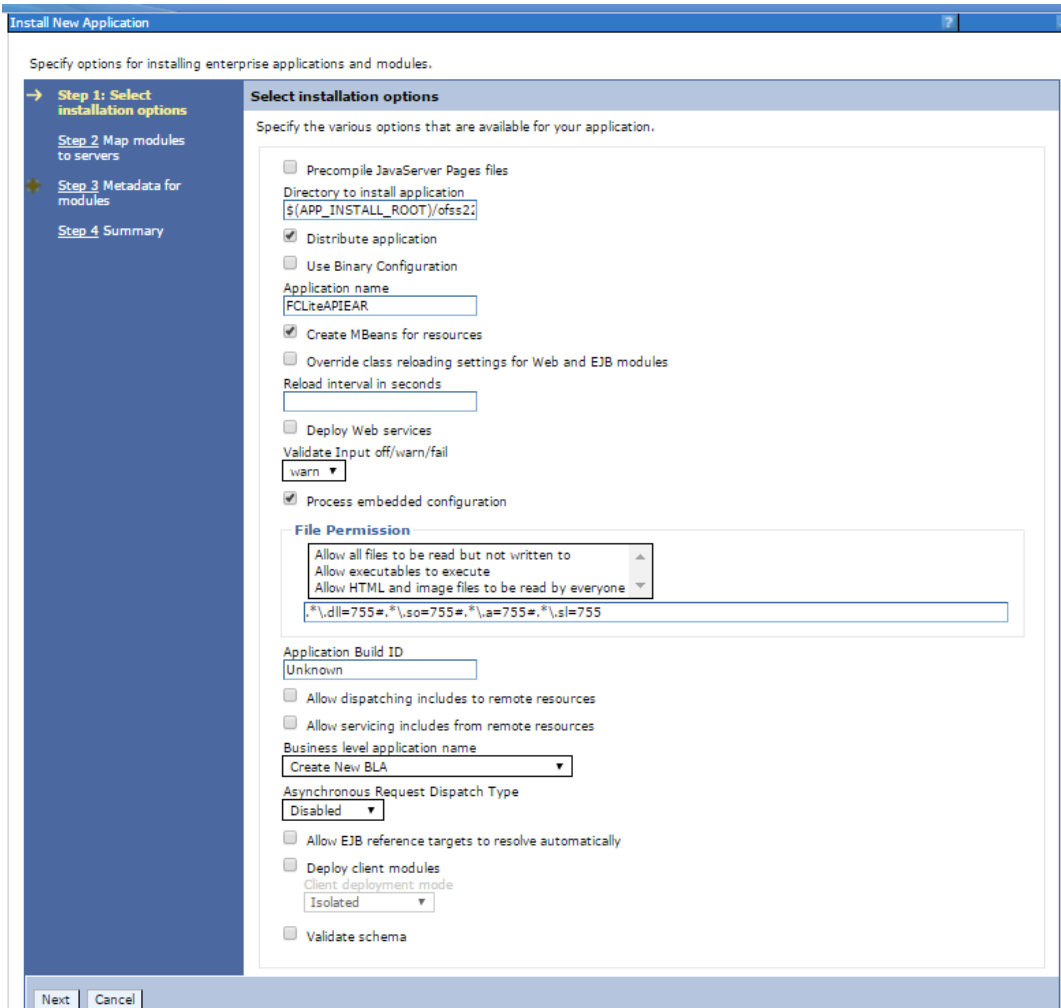
Fast Path - Prompt only when additional information is required.

Detailed - Show all installation options and parameters.

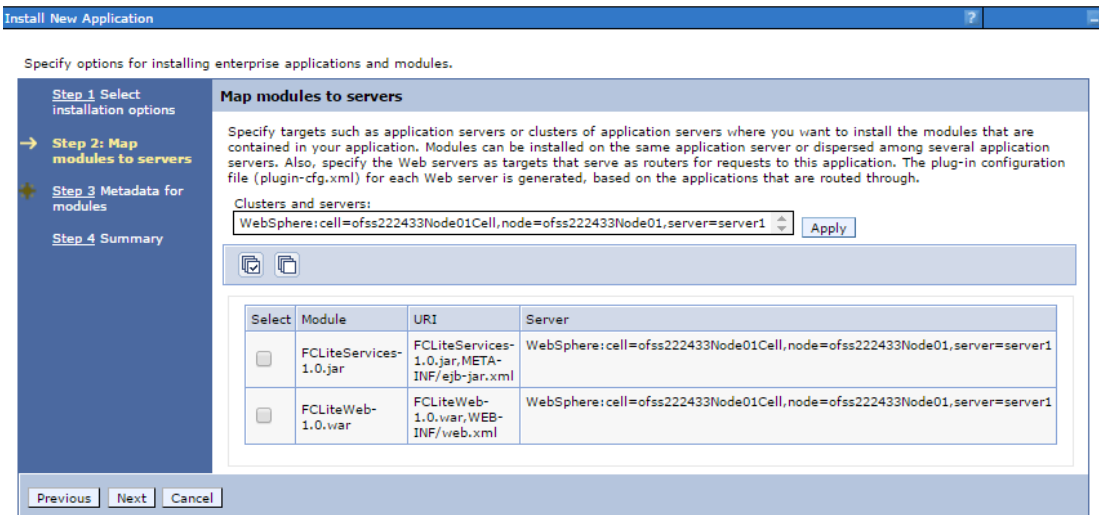
Choose to generate default bindings and mappings

Previous Next Cancel

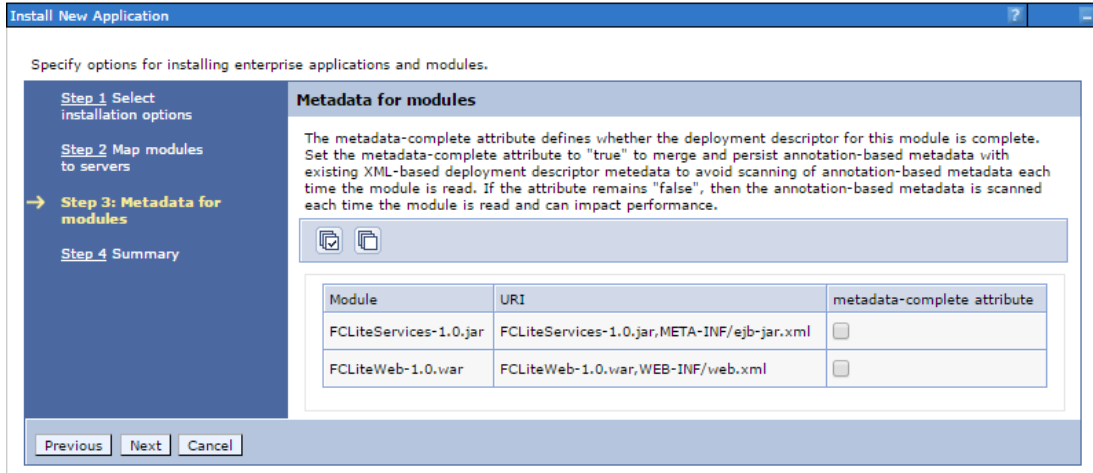
10. Click Next and the following screen will be displayed.



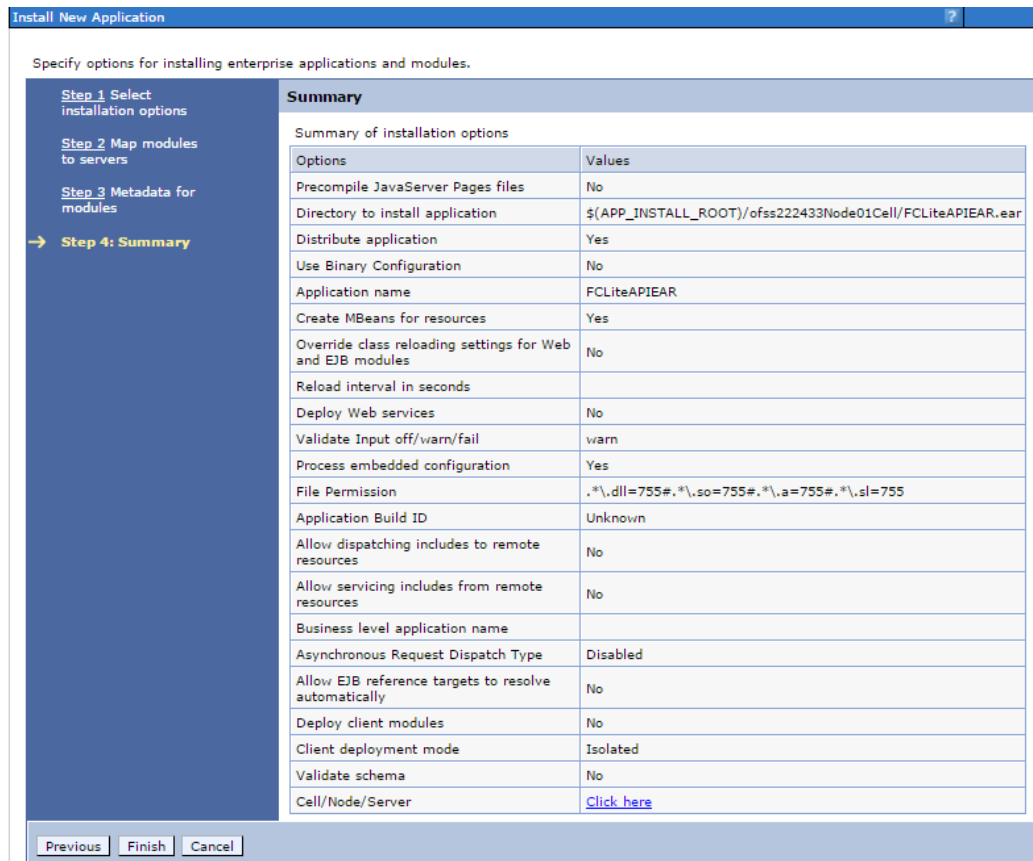
11. Click Next and the following screen will be displayed.



12. Click Next and the following screen will be displayed.



13. Click Next and the following screen will be displayed.



14. Click Finish and the following screen will be displayed and Save the EAR deployed.

If there are enterprise beans in the application, the EJB deployment process can take several minutes. Do not save the configuration until the process completes.

Check the SystemOut.log on the deployment manager or server where the application is deployed for specific information about the EJB deployment process as it occurs.

ADMA5016: Installation of FCLiteAPIEAR started.

ADMA5067: Resource validation for application FCLiteAPIEAR completed successfully.

ADMA5058: Application and module versions are validated with versions of deployment targets.

ADMA5005: The application FCLiteAPIEAR is configured in the WebSphere Application Server repository.

ADMA5005: The application FCLiteAPIEAR is configured in the WebSphere Application Server repository.

ADMA5081: The bootstrap address for client module is configured in the WebSphere Application Server repository.

ADMA5053: The library references for the installed optional package are created.

ADMA5005: The application FCLiteAPIEAR is configured in the WebSphere Application Server repository.

ADMA5001: The application binaries are saved in /scratch/programs/IBM/WebSphere/AppServer/profiles/AppSrv01/wstemp/D/workspac/e/cells/ofss222433Node01Cell/applications/FCLiteAPIEAR.ear/FCLiteAPIEAR.ear

ADMA5005: The application FCLiteAPIEAR is configured in the WebSphere Application Server repository.

SECJ0400: Successfully updated the application FCLiteAPIEAR with the appContextIDForSecurity information.

ADMA5005: The application FCLiteAPIEAR is configured in the WebSphere Application Server repository.

ADMA5005: The application FCLiteAPIEAR is configured in the WebSphere Application Server repository.

ADMA5113: Activation plan created successfully.

ADMA5011: The cleanup of the temp directory for application FCLiteAPIEAR is complete.

ADMA5013: Application FCLiteAPIEAR installed successfully.

Application FCLiteAPIEAR installed successfully.

To start the application, first save changes to the master configuration.

Changes have been made to your local configuration. You can:

- [Save](#) directly to the master configuration.
- [Review](#) changes before saving or discarding.

To work with installed applications, click the "Manage Applications" link.

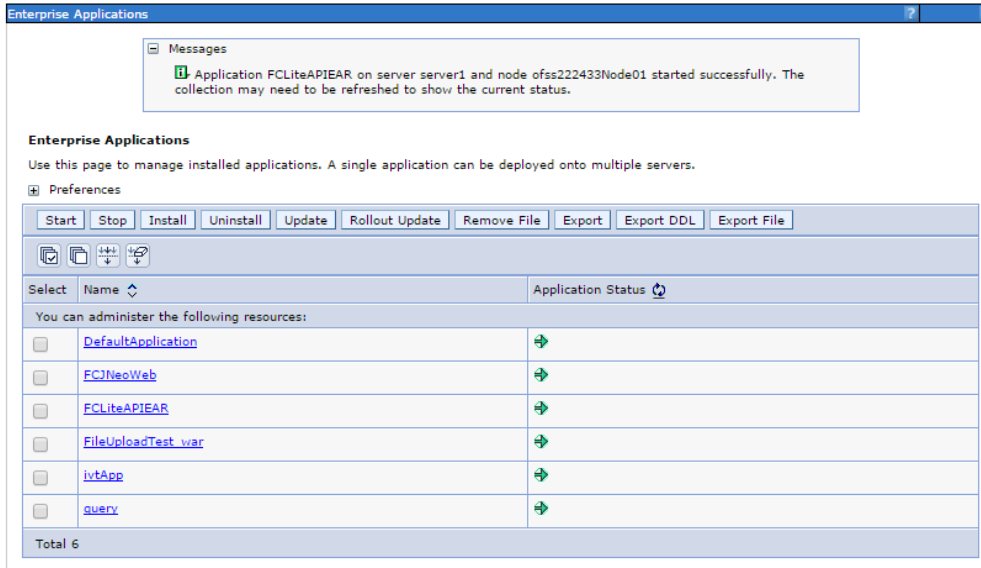
[Manage Applications](#)

15. Once the EAR is deployed click on WebSphere enterprise applications following screen will be displayed where the deployed EAR can be found in resources column.

Select	Name	Application Status
<input type="checkbox"/>	DefaultApplication	➔
<input type="checkbox"/>	FCJNeoWeb	➔
<input type="checkbox"/>	FCLiteAPIEAR	✘
<input type="checkbox"/>	FileUploadTest_war	➔
<input type="checkbox"/>	ivtApp	➔
<input type="checkbox"/>	query	➔

Total 6

16. Check the application/EAR and click on Start the following screen will be displayed and your application will be in running.



Note: Before deploying the EAR, please create an XA Datasource **jdbc/fcliteAPIDS** that will be referring to the API DB. More details of creating the data source can be found in the Resource Creation document.

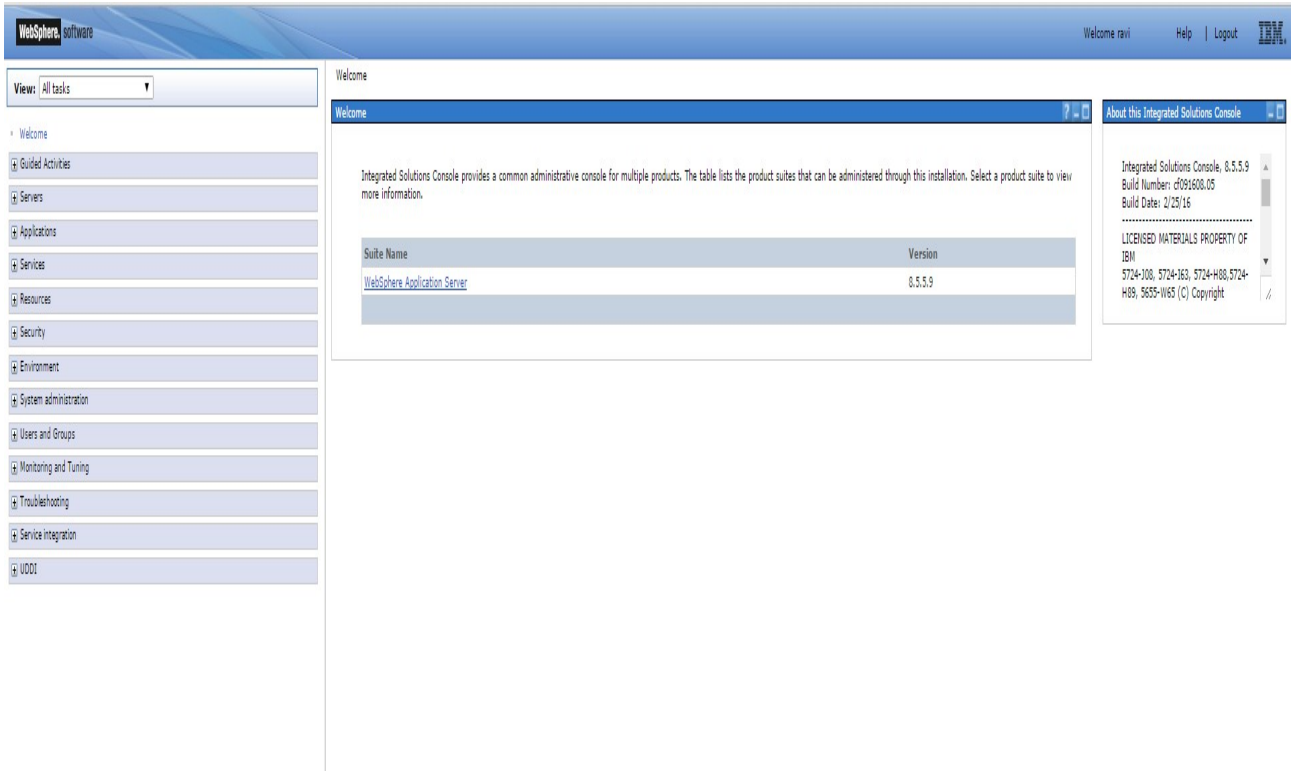
1.2 Enabling logs for REST Application

1. Launch WebSphere console following screen will be displayed.

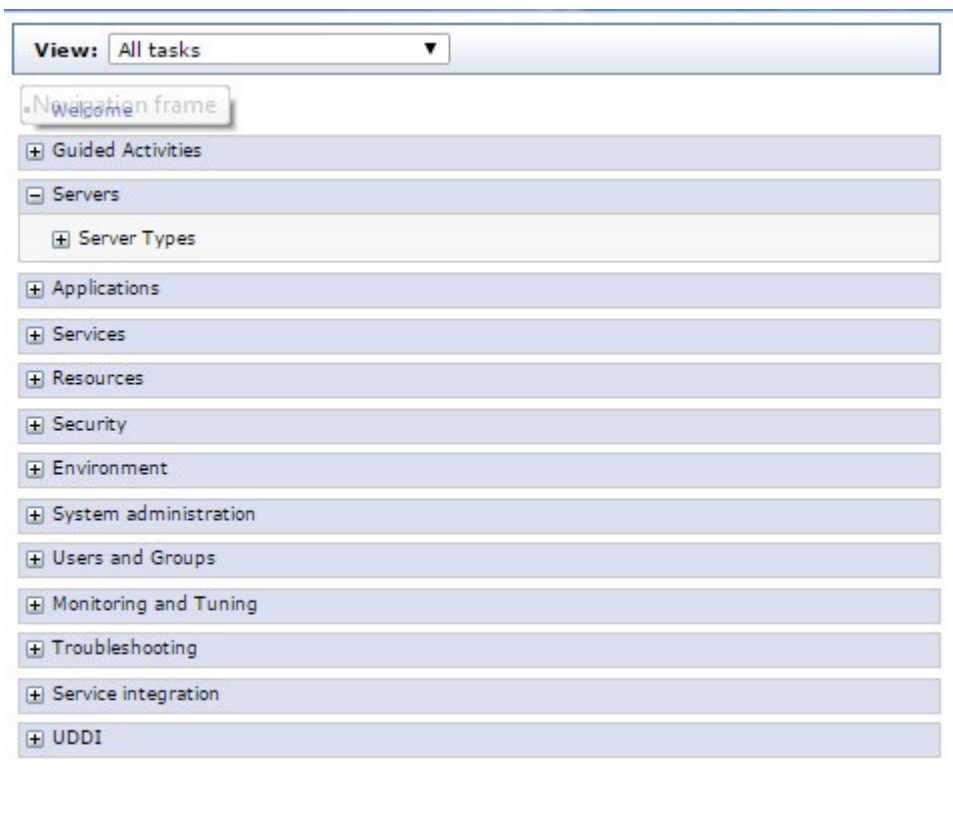


UserId: Enter user name

2. Click on 'Log in' and the following screen is displayed:



3. Expand 'Servers' from the left panel and the following screen is displayed:



4. Expand 'Server Type' and Click WebSphere application servers and the following screen is displayed:

Cell=ofss222433Node01Cell, Profile=AppSrv01

Application servers

Application servers

Use this page to view a list of the application servers in your environment and the status of each of these servers. You can also use this page to change the status of a specific application server.

Preferences

Name	Node	Host Name	Version
You can administer the following resources:			
server1	ofss222433Node01	ofss222433.in.oracle.com	10.8.5.5.9
Total 1			

5. Click server1 and the following screen is displayed:

General Properties

Name: server1

Node name: ofss222433Node01

Run in development mode

Parallel start

Start components as needed

Access to internal server classes: Allow

Server-specific Application Settings

ClassLoader policy: Multiple

Class loading mode: Classes loaded with parent class loader first

Apply OK Reset Cancel

Container Settings

- Session management
- SIP Container Settings
- Web Container Settings
- Portlet Container Settings
- EJB Container Settings
- Container Services
- Business Process Services

Applications

- Installed applications

Server messaging

- Messaging engines
- Messaging engine inbound transports
- WebSphere MQ link inbound transports
- SIB service

Server Infrastructure

- Java and Process Management
- Administration
 - Java SDKs

Communications

- Ports
- Messaging
 - Communications Enabled Applications (CEA)

Performance

- Performance Monitoring Infrastructure (PMI)
- Performance and Diagnostic Advisor Configuration

Security

- Security domain
- Default policy set bindings
- JAX-WS and JAX-RPC security runtime

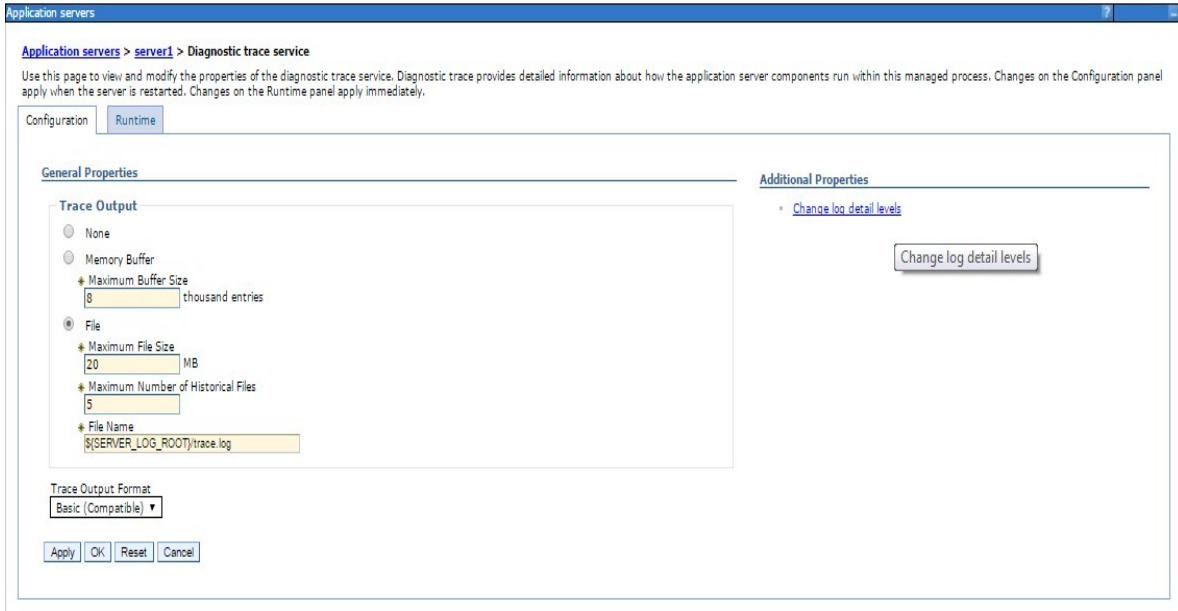
Troubleshooting

- NCSA access and HTTP error logging
- Diagnostic trace service
- Logging and tracing
- Change log detail levels [Use this page to view and modify the properties for the diagnosti](#)

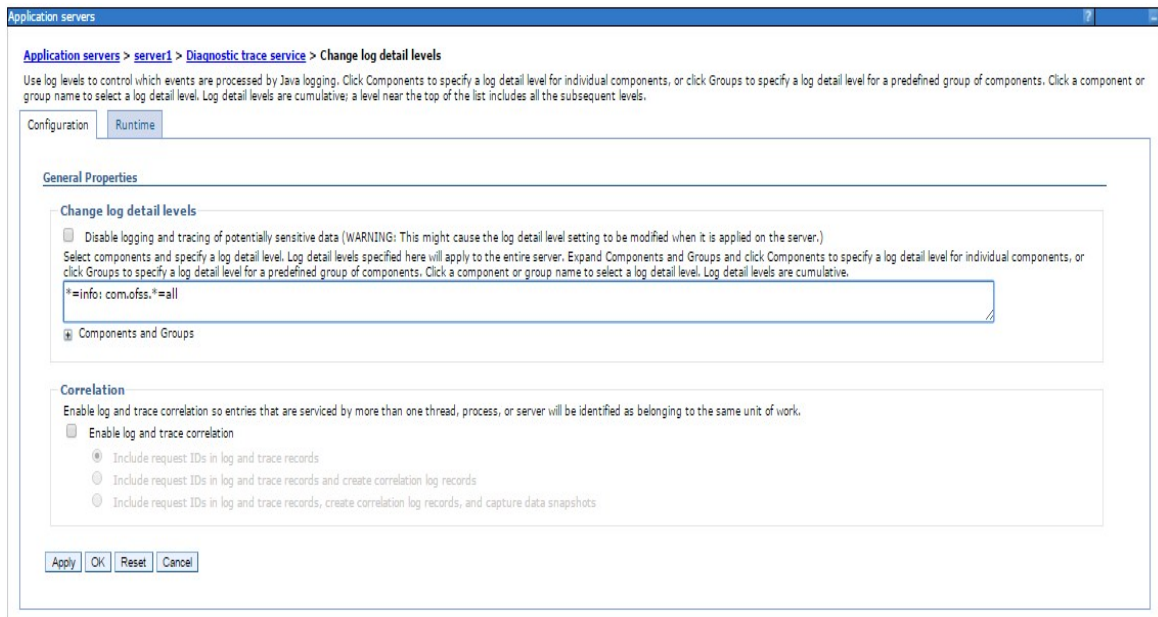
Additional Properties

- Class loader viewer service
- Endpoint listeners
- Debugging service
- Thread pools
- Reliable messaging state
- Web server plug-in properties

6. Click Diagnostic trace service and the following screen is displayed:



7. Click Change log detail levels and the following screen is displayed:



Change log detail levels

Add the entry com.off.*=all to the existing entry (i.e., now it will be *=info: com.ofss.*=all)

8. Restart the server post the change

9. The logs will now be written into the log area that is specified in the configuration **Application servers > server1 > Diagnostic trace service**.



REST API SERVICES Deployment in Websphere
[May] [2021]
Version 12.87.7.0.0

Oracle Financial Services Software Limited
Oracle Park
Off Western Express Highway
Goregaon (East)
Mumbai, Maharashtra 400 063
India

Worldwide Inquiries:
Phone: +91 22 6718 3000
Fax: +91 22 6718 3001
<https://www.oracle.com/industries/financial-services/index.html>

Copyright © [2007], [2021], Oracle and/or its affiliates. All rights reserved.

Oracle and Java are registered trademarks of Oracle and/or its affiliates. Other names may be trademarks of their respective owners.

U.S. GOVERNMENT END USERS: Oracle programs, including any operating system, integrated software, any programs installed on the hardware, and/or documentation, delivered to U.S. Government end users are "commercial computer software" pursuant to the applicable Federal Acquisition Regulation and agency-specific supplemental regulations. As such, use, duplication, disclosure, modification, and adaptation of the programs, including any operating system, integrated software, any programs installed on the hardware, and/or documentation, shall be subject to license terms and license restrictions applicable to the programs. No other rights are granted to the U.S. Government.

This software or hardware is developed for general use in a variety of information management applications. It is not developed or intended for use in any inherently dangerous applications, including applications that may create a risk of personal injury. If you use this software or hardware in dangerous applications, then you shall be responsible to take all appropriate failsafe, backup, redundancy, and other measures to ensure its safe use. Oracle Corporation and its affiliates disclaim any liability for any damages caused by use of this software or hardware in dangerous applications.

This software and related documentation are provided under a license agreement containing restrictions on use and disclosure and are protected by intellectual property laws. Except as expressly permitted in your license agreement or allowed by law, you may not use, copy, reproduce, translate, broadcast, modify, license, transmit, distribute, exhibit, perform, publish or display any part, in any form, or by any means. Reverse engineering, disassembly, or decompilation of this software, unless required by law for interoperability, is prohibited.

The information contained herein is subject to change without notice and is not warranted to be error-free. If you find any errors, please report them to us in writing.

This software or hardware and documentation may provide access to or information on content, products and services from third parties. Oracle Corporation and its affiliates are not responsible for and expressly disclaim all warranties of any kind with respect to third-party content, products, and services. Oracle Corporation and its affiliates will not be responsible for any loss, costs, or damages incurred due to your access to or use of third-party content, products, or services.